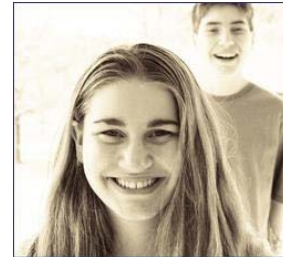


**Light up Your World with Knowledge and Understanding. Start today. Start here.**

- Mental health provider number on the back of your private insurance card or Employee Assistance Program, if available.



**Free Information • Education • Referral**

- [www.guidetofeelingbetter.org](http://www.guidetofeelingbetter.org)
- **Mental Health America of NKY** [www.mhanky.org](http://www.mhanky.org) 859-431-1077
- **Mental Health Access Point 24-hour Hamilton County** [www.centralclinic.org](http://www.centralclinic.org) 513-558-8888
- **Mental Health America of SW Ohio** [www.mentalhealthassn.org](http://www.mentalhealthassn.org) 513-721-2910
- **National Alliance on Mental Illness** [www.nami-hc.org](http://www.nami-hc.org) 513-351-3500
- **National Alliance on Mental Illness NKY** 859-261-4080
- **Recovery Health Access Center** Hamilton County and NKY SA Referral Line 513-281-7422
- **Catholic Charities** Diocese of Covington [www.covingtoncharities.org](http://www.covingtoncharities.org) Toll Free 866-440-9612
- **United Way Help Line** 24-hour hotline 211

 [www.GuideToFeelingBetter.org](http://www.GuideToFeelingBetter.org)

**Treatment • Crisis Stabilization**

- **Cincinnati Children's Hospital** 24-hour Psychiatric Intake Response Team 513-636-4124
- **Family Nurturing Center** Child Abuse Treatment Services [www.familynurture.org](http://www.familynurture.org) 859-525-3200
- **Lindner Center of Hope** [www.lindnercenterofhope.org](http://www.lindnercenterofhope.org) 513-536-4673
- **NorthKey Community Care Children's Intensive Services** NKY 24-hr inpatient/outpatient MH/SA services and youth crisis stabilization [www.northkey.org](http://www.northkey.org) 859-331-3292, 859-331-1792 TTY
- **St. Elizabeth, Florence Outpatient Chemical Dependency** [www.stelizabeth.com](http://www.stelizabeth.com) 859-212-5384
- **The Christ Hospital** Sub. Abuse Outpatient Cincinnati [www.thechristhospital.com](http://www.thechristhospital.com) 513-585-8500
- **University Hospital** 24-hour Mobile Crisis Team and Psychiatric Emergency 513-584-8577
- **Sexual/Physical Assault Crisis Line** NKY 1-800-928-3335 Cincinnati 513-381-5610
- **Suicide Prevention Hotline** 1-800-273-TALK